

Creating an Outcomes Map

March 5, 2015
Student Affairs Assessment

To participate...

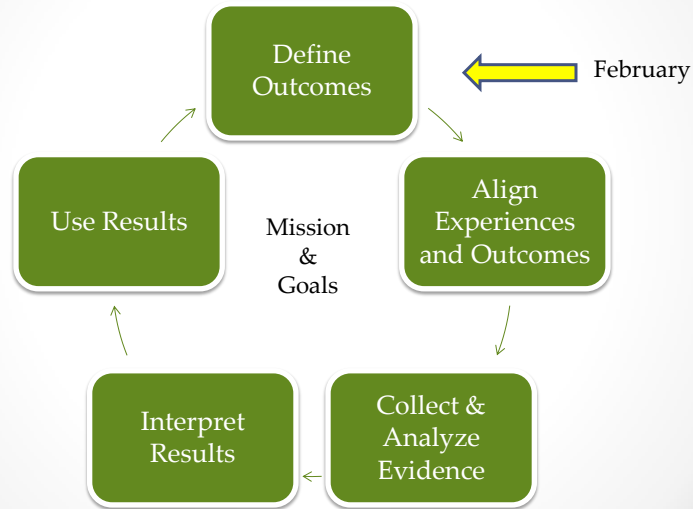
DOWNLOAD THE
FREE

CAMPUS LABS RESPOND

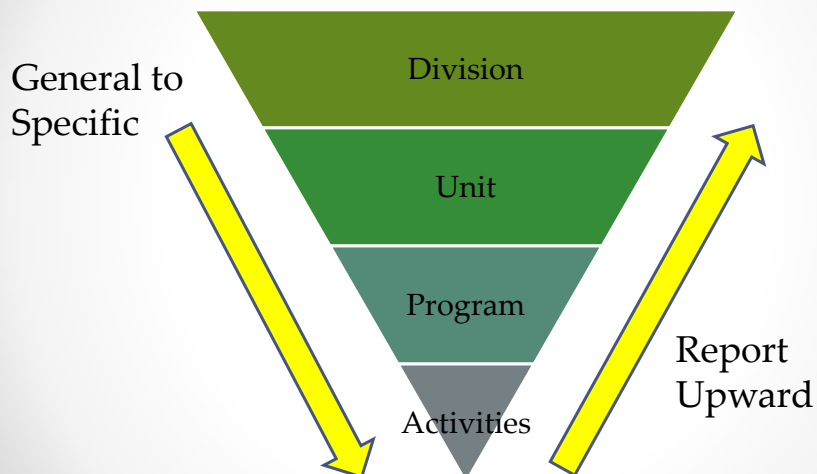


OR VISIT
srs.campuslabs.com

Assessment Cycle



Levels of Outcomes



Example: Associated Students

- **Division** - Advance a Plan for Personal, Academic, and Professional Success – Acquire time management skills (SALO 3)
- **Unit – Associated Students:** Student will develop time management skills
- **Program – Raising the Bar:** As a result of participating in Raising the Bar, student will demonstrate increased punctuality.
- **Activity – Raising the Bar Time Management Workshops:** As a result of participating in the Time Management Workshops, students will demonstrate increased punctuality (arriving prepared and on-time for commitments) as measured by the AS observation rubric.

Assessment Cycle



Session Outcomes

By the end of the session you will:

1. Know what an outcomes map is
2. Know how to create an outcomes map

Outcomes Map

• • •

A graphical illustration of the relationship between a unit's programming and the unit's outcomes

Why Outcomes Mapping?

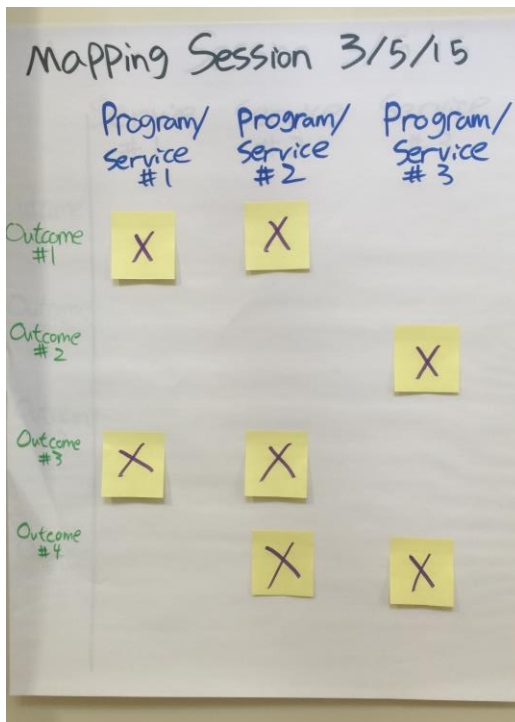
- Ensures programming and outcomes alignment
- Reveals gaps or overlaps in programming
- Identifies assessment opportunities
- Basis for a multi-year assessment plan

Outcomes Map

	Programs/Services			How will you gather evidence?
	Program/Service 1	Program/Service 2	Program/Service 3	
Unit Outcome 1	X		X	
Unit Outcome 2	X	X		
Unit Outcome 3		X		

Example: Associated Students

	Raising the Bar	Tritons Equity, Diversity & Inclusion	AS Council Retreat
Conflict Resolution	X		X
Time Management	X		X
Social Justice/ Equity-Minded Leadership		X	X



Creating an Outcomes Map

- Big, blank grid
- Top: Programs/Services
- Side: Outcomes
- Sticky-notes, markers

Analyze the Map

- Does each program/service support at least one unit outcome?
- Is each unit outcomes supported by at least one program/service?
- Where are the assessment opportunities?

MAPPING Session 3/5/15

	Program/ Service #1	Program/ Service #2	Program/ Service #3
Outcome #1		X	
Outcome #2			X
Outcome #3	X		
Outcome #4		X	X

Analyze the Map

- Reflect on the alignment
- Put an asterisk by assessment opportunities
- Discuss how/when you will assess each outcome

Fake Example: Career Services

	Student Employee Training	Career Development Programs	Practice Interview Days
Communicate Effectively	X		X
Describe SKA through resumes, cover letters, and interviews	X	X	X
List ways to get experience in field		X	

Tips



- Schedule during a regular unit meeting
- Expect to meet more than once
- Share, share, share!



Marlene P. Lowe
mplowe@ucsd.edu

Spring 2015

- Don't Fear the Data
May 7, 2015
Marshall College Room, PC West

****July 17, 2015****

Assessment Reports
Unit Outcomes
Outcomes Maps

•

•