

Assessment Road Map: Linking Assessment Strategies to Learning Outcomes

February 27, 2014
Student Affairs Assessment

Learning outcomes are like a **thesis statement**, they need to be **infused** throughout the work.

- Victoria E. Couch
(SDSU Graduate Student)

Workshop Outcomes

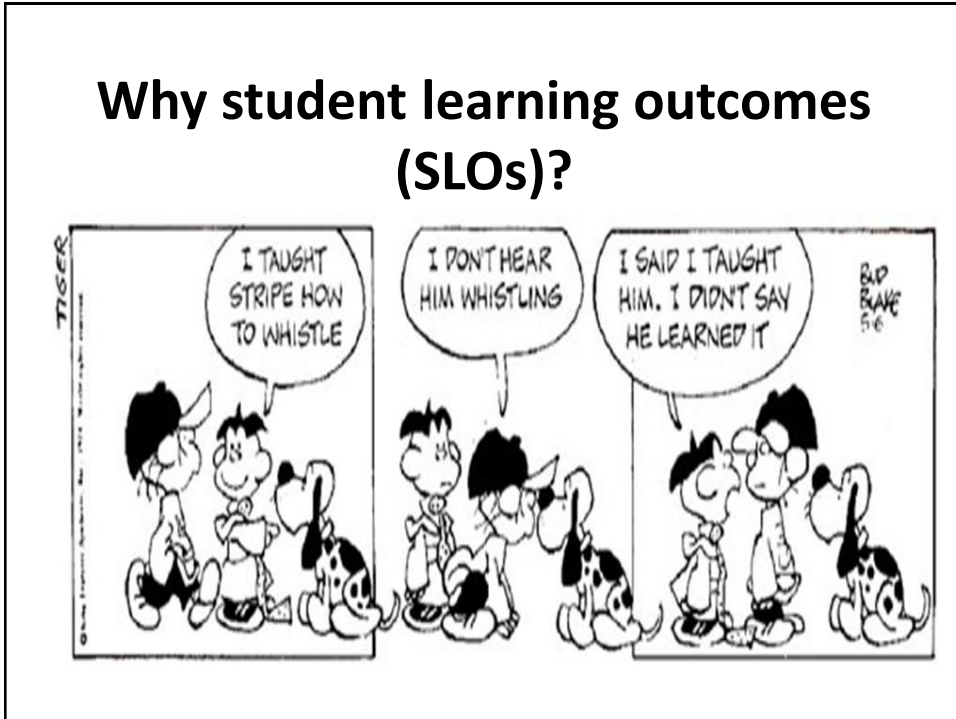
By the end of this workshop, you will

- Understand how to infuse your SLOs into your assessment
- Complete Q1-Q7 of the Road Map

Assessment Cycle



Why student learning outcomes (SLOs)?



SMART SLOs

S

• Specific

M

• Measurable

A

• Attainable

R

• Realistic

T

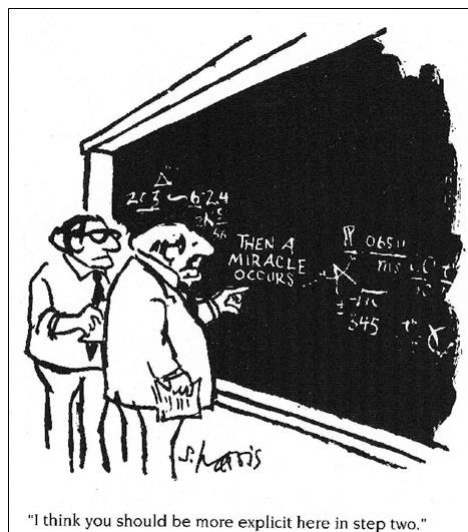
• Time-bound

Your Turn

- Evaluate 1 or 2 SLOs using the SMART approach.
- Are modifications needed?

	SLO 1	SLO 2	SLO 3
S	X	X	X
M	X		X
A		X	X
R	X	X	X
T		X	X

Where does the learning occur?



Activity Map: Linking SLOs to Activities

	SLO 1	SLO 2	SLO 3
Activity/Experience	X		
Activity/Experience		X	
Activity/Experience	X		X

Your Turn

- Choose 1 or 2 SLOs and link them to learning activities
- Where/how can learning be assessed?

	SLO 1	SLO 2	SLO 3
Counseling	X	X	
Discover the Law		X	X
Workshops		X	X

Created example from Student Legal Services

Identify your assessment question(s)

- “As a result of participating in X
are students able to do Y?”
- “My program did X and
I am curious if students know
more about Y.”

Your Turn

Refer to the [Road Map](#) handout

- Complete [Q1 – Q3](#)

Identify Information/Evidence

What do you need to gather in order to answer the assessment question?

- Opinions
- Performance
- Other

Collecting Information/Evidence

- Opinion
 - Survey
 - Interview/Focus Group
 - Journal
- Performance
 - Quiz
 - Performance Rubric
- Other
 - Internal or external source

Choosing an information/evidence collection method

Ask yourself:

- What **outcome** is being assessed?
- What is the assessment **question**?
- What evidence is **already available**?

Choosing an information/evidence collection method

Ask yourself:

- What method answers the assessment **question**?
- What method provides the strongest **evidence**?
- What method is **realistic** in terms of resources and logistics?

Your Turn

Refer to the [Road Map](#) handout

- Complete [Q4 – Q7](#)

SLOs Infused Assessment

Ask yourself:

- What SLO(s) am I [curious](#) about?
- How are my SLO and assessment question [related](#)?
- Does my evidence collection method [address](#) my SLO?
- Does my evidence collection method [answer](#) my assessment question?

Questions?



Workshop Evaluation

Bonus Question:

What is your analogy
for SLOs and assessment?

THANK YOU!